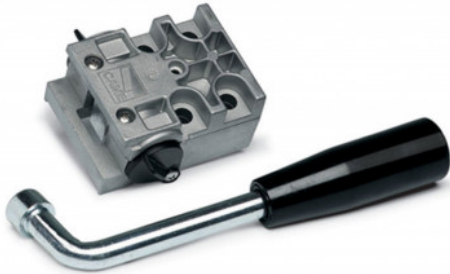


## CAME-A4364



### FROG RELEASE SYSTEM - TUBULAR TYPE 10 LEVER KEY

#### FEATURES

- The invisible solution to power your gate
- Protection rating against weathering agents IP67.
- Foundation box in steel with anticorrosive treatment, or in AISI 304 stainless steel.
- Automatic re-hooking of the release system after the gate manual maneuver.
- Integrated, adjustable mechanical limit switches.
- Opening up to 180° (with FL-180 accessory).
- Set up for operation in case of power outage in the 24 V DC versions.
- Developed with CONNECT technology for remote digital control via gateway or locally via CAME KEY.