

ER451LM-FIRE

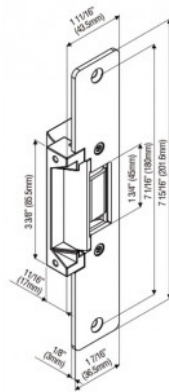


12/24VDC FIRE RATED MONITORED LONG F/PLATE FAIL SAFE/SECURE

Universal fire rated electric strike 12/24Vdc, monitored with long face plate

FEATURES

The ER451 ANSI electric strike is designed to work with most types of mechanical night latches. It includes an optional latch monitor and is field reversible for fail-safe or fail-secure operation. Can be installed in metal and wood door frames.



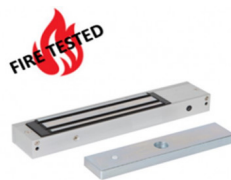
TECHNICAL INFORMATION

- Non-handed fully reversible
- Field reversible fail-safe or fail-secure
- Static strength 1,500 lbs (680Kg)
- Dynamic strength 70 ft-lbs
- Endurance 100,000 cycles UL tested, 1,000,000 cycles factory tested
- Brushed stainless steel (US32D) finish
- Voltage: 12, 24 or dual 12/24 VDC
- Latch Throw: 9/16" (15mm)
- Optional latch monitor
- Reversible Fail-safe or Fail-secure
- Body construction: Zinc alloy, Stainless steel

RELATED PRODUCTS



DU01-CP22



EM02-FIRE



ER310-1224