

EM20-ECO



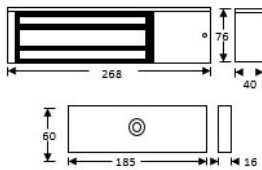
STANDARD MONITORED ECO FRIENDLY MAGLOCK 12/24VDC

Low energy consumption, standard, single monitored magnetic lock, designed for indoor applications where 545kg holding force is required. Monitoring provides LED lock status indication and relay contacts for signaling. Compatible with existing maglock and associated bracket range.

FEATURES

HALF THE POWER CONSUMPTION ALL THE HOLDING FORCE

- MOV provides spike and surge protection
- Compatible with existing maglock and associated bracket range
- Fail-safe operation (power to lock)
- Anti-residual magnetism protection
- Top-plate, armature-plate and fixings included
- Dual voltage 12Vdc or 24Vdc (selectable)
- Surface mount & Silver anodised aluminium finish
- Lock monitoring



Recent customer quoted as saying *"I will ensure that we use the ECO range from now on, the other advantage to us is, as we supply Access control units that control up to 8 doors the total reduction in current is significant and reduces the Power Supply requirements or least means they run cooler and more reliably"*.

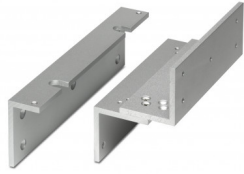
TECHNICAL INFORMATION

- Holding force: up to 545kg (1200lb)
- Current draw = 250mA @ 12Vdc / 130mA @ 24Vdc
- Voltage tolerance: +/- 5%
- Operating temp: -10°C to +55°C, Humidity: 0-95% non-condensating
- Weight: 4.5kg approx.
- Red/Green LED indicator
- Relay: COM/NO/NC

RELATED PRODUCTS



EM500AZLG-DC



EM500ZL



EM02-ECO



EM05-ECO