

CP3-R



GREEN RESETTABLE TRIPLE POLE BREAK GLASS WITH RED INDICATOR

FEATURES

- Triple pole
- Resettable
- Power 12/24Vdc
- Protective cover supplied as standard
- Single gang
- Unlit when in standby
- Steady or flashing red LEDs upon activation
- No sounder included
- Surface mount

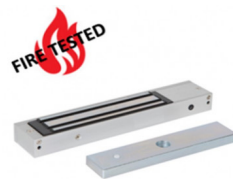
TECHNICAL INFORMATION

- Contact load 125v/3A
- Unlit when in standby
- Steady or flashing red LEDs upon activation
- Active current 75mA Standby current 41mA
- Size 85mm x 85mm x 42mm (excluding cover)

RELATED PRODUCTS



NT200



EM01-FIRE



EM300ZL-FIRE