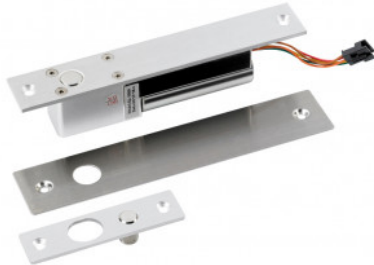


EB250**12VDC FLUSH MONITORED SOLENOID BOLT**

This flush mount solenoid bolt provides a reliable and secure means of locking at low cost. The adjustable auto-lock delay feature allows the door time to settle before trying to lock.

FEATURES

- Microswitched
- 12Vdc
- Fail safe
- Bolt diameter 15mm
- Auto lock delay
- Includes optional cover plate
- Activating current 900mAmp
- Holding current 200mAmp
- Door position monitoring

TECHNICAL INFORMATION

- Voltage: 12Vdc
- Current draw: 900mA activating current 360mA holding current
- Auto lock delay settings: 0s, 2.5s, 5s, 9s
- Dimensions: Main body: 200mm(L) x 32mm(W) x 40mm(D)
Keep plate: 90mm(L) x 26mm(W) x 7mm(D)
Bolt: 15mm dia. x 16mm throw
- Door position monitoring switch (COM and NO contacts)

RELATED PRODUCTS**EB200N****EM04DS****KGG1SG****SPB003NF**