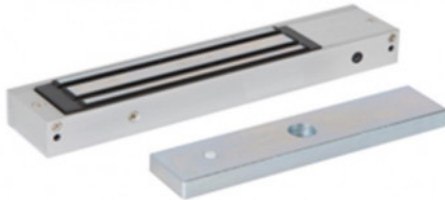


EM02-FIRE



SLIM FIRE RATED MONITORED MAGLOCK 12/24VDC

Slim single fire rated lock-monitored magnetic lock. Its compact design makes it ideal for most indoor applications where 275kg holding force is sufficient. Monitoring provides LED lock status indication and relay contacts for signalling.

FEATURES

- Fire rated
- MOV provides spike and surge protection
- Fail-safe operation (power to lock)
- Anti-residual magnetism protection
- Top-plate, armature-plate and fixings included
- Slim design
- Dual voltage 12Vdc or 24Vdc (selectable)
- Surface mount
- Silver anodised aluminium finish
- Lock monitoring

TECHNICAL INFORMATION

- Holding force: up to 275kg (600lb)
- Current draw = 500mA @ 12Vdc / 250mA @ 24Vdc
- Voltage tolerance: +/- 15%
- Operating temp: -10°C to +55°C
- Humidity: 0-95% non-condensating
- Weight: 2kg approx.
- Red/Green LED indicator
- Relay: COM/NO/NC (1A@24Vdc)
- Mag 250mm Long
- Armature 180mm Long

RELATED PRODUCTS



CP22



EM300ZL-FIRE



EM05DS



EM20DS