

**EM05-FIRE****SLIM FIRE RATED MONITORED  
DOUBLE MAGLOCK 12/24VDC**

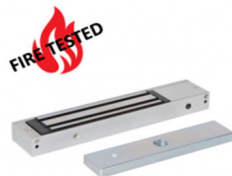
Fire rated slim monitored double magnetic lock for double doors. It's compact design makes it ideal for indoor applications where 275kg of holding force is sufficient. The monitoring provides LED lock status indication and relay contacts for signalling.

**FEATURES**

- MOV provides spike and surge protection
- Fail-safe operation (power to lock)
- Anti-residual magnetism protection
- Top-plate, armature-plate and fixings included
- Slim design
- Dual voltage 12Vdc or 24Vdc (selectable)
- Surface mount
- Silver anodized aluminium finish

**TECHNICAL INFORMATION**

- Holding force: up to 275kg (600lb) per side
- Current draw = 500mA @ 12Vdc / 250mA @ 24Vdc per side
- Voltage tolerance: +/- 15%
- Operating temp: -10°C to +55°C
- Humidity: 0-95% non-condensating
- Weight: 4kg approx.

**RELATED PRODUCTS****CM41/4****EM02-FIRE****EM300L-FIRE****EM300ZL-FIRE**