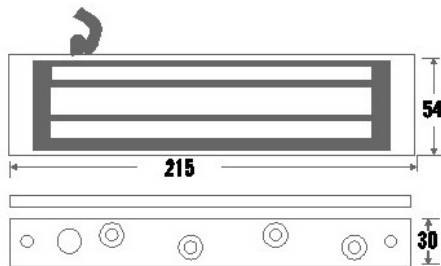


EM06S



MIDI SURFACE STANDARD FIXING WEATHERPROOF MAGLOCK 12VDC

Midi single external magnetic lock offering up to 340kg of holding force. Totally sealed in an epoxy stainless steel casing this maglock is both vandal resistant and weatherproof.

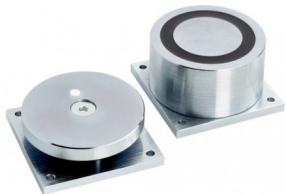
FEATURES

- Unmonitored
- Totally sealed in an epoxy stainless steel casing this maglock is both vandal resistant and weatherproof
- Current Draw: 340mA@12Vdc
- Up to 340kg (800lb) holding force
- Surface mount
- Stainless steel
- Top plate, armature and fixings included

TECHNICAL INFORMATION

- Voltage Tolerance: +/-15%
- Magnetic bond sensor monitor output (00R)
(SPDT RATED 0.5A@12VDC)
- Operating Temperature: -10~55C (14~131F)
- Dimensions:
Magnet (L)216. (W)52. (D)30mm
Armature: (L)185. (W)45. (D)14.mm
- Epoxy Potting Compound: E87252 (S), UL94V-0
- Weight (approx) : 3.0kg
- Z bracket EM850Z

RELATED PRODUCTS



EXT-R12/24



EXT800



SPB050



WWG7-220G(M)