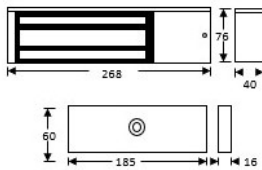
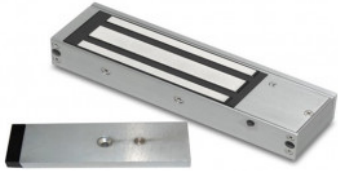


## EM20DS-ARM/SAFETY



## STANDARD MONITORED MAGLOCK WITH DOOR STATUS AND ARM STRAP

Standard monitored magnetic lock designed for indoor applications where 545kg holding force is required. LED lock status indication and relay contacts for signalling. This model includes door status monitoring contacts to monitor the door position.

### FEATURES

- Standard monitored maglock with door status and arm strap

### TECHNICAL INFORMATION

- Standard monitored magnetic lock designed for indoor applications where 545kg holding force is required.
- LED lock status indication and relay contacts for signalling.
- This model includes door status monitoring contacts to monitor the door position.

## RELATED PRODUCTS

 <p><b>ARM/SAFETY-KIT</b></p>	 <p><b>EM20-FIRE</b></p>	 <p><b>EM20DS</b></p>	 <p><b>EM20DS-FIRE</b></p>
------------------------------------------------------------------------------------------------------------------	-------------------------------------------------------------------------------------------------------------	-----------------------------------------------------------------------------------------------------------	-----------------------------------------------------------------------------------------------------------------