

## EM750R

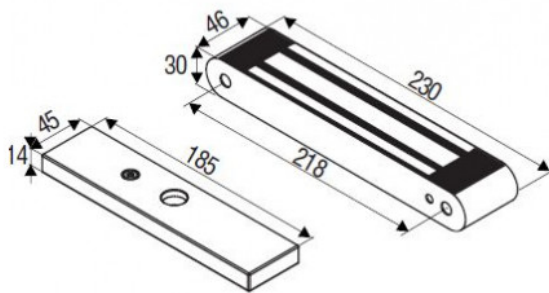


### ARCHITECTURAL MIDI MONITORED MAGLOCK WITH RADIUS ENDS 12VDC

Midi single external magnetic lock with radius ends offering up to 340kg of holding force. Totally sealed in an epoxy stainless steel casing this maglock is both vandal resistant and weatherproof with the radius ends giving a more aesthetically pleasing appearance.

#### FEATURES

- Holding force up to 800lbs (363kg)
- Lock monitoring
- Top plate, armature and fixings included
- Dual voltage 12 or 24VDC selectable
- MOV provides spike & surge protection
- Stainless steel case
- Anti-residual magnetism function
- Fail-safe (power to lock)



#### TECHNICAL INFORMATION

- Voltage Tolerance: +/-15%
- Current Draw: 340mA@12Vdc
- Magnetic bond sensor monitor output (00R) SPDT RATED 0.5A@20VDC
- Operating Temperature: -10~55C (14~131F)
- Holding Force Up to 800lbs (363kg)
- Dimensions:  
Magnet (L)230. (W)46. (D)30mm  
Armature: (L)185. (W)45. (D)14.mm
- Epoxy Potting Compound: E87252 (S), UL94V-0
- Weight (approx) : 3.0kg

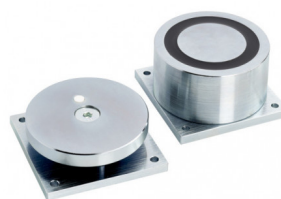
## RELATED PRODUCTS



**DG35**



**EM06S**



**EXT-R12/24**



**WWG7-220G(M)**