

## ER310S-24



### 24VDC ANSI RELEASE SHORT FACEPLATE FAIL SAFE/SECURE

This 24Vdc ANSI style electric release (strike) is supplied with a short faceplate and is field selectable for fail-safe or fail-secure operation. Recommended for metal door frames but also suitable for timber frames.

#### FEATURES

- Ansi style release
  - Switchable fail safe / fail secure
  - Lip extensions available
  - Reversible
  - 24Vdc Current consumption with 150mA current draw
  - Short faceplate suitable for metal doors
- 
- TIP; Fail safe means when the power is cut the door will open, fail secure means when the power is cut the door will remain shut.

#### TECHNICAL INFORMATION

- Power Input: 12 V DC (24V DC available by special order)
- Voltage Tolerance: 15%
- Current Draw: 0.25 A@12 VDC; 0.15 A@24 VDC at temperature 20
- Sensor Switch: monitored output (optional model)
- Rating 2A@125V, indicates the lockset locked or unlocked status
- Operating Temperature: -10~45
- Humidity: 0~95% non-condensing
- Lock's surface Temperature (when the power is on): <current temperature +20
- 2000lbs jaw strength pull testing
- Tested to 1,000,000 cycles
- Weight: 380g (approx)

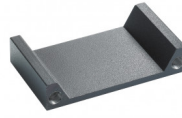
## RELATED PRODUCTS



**DU03-CP3LSRC**



**ER310-1224**



**LP050**



**SASHFP**