

ER310SM-24



24VDC MONITORED ANSI RELEASE SHORT FACEPLATE FAIL SAFE/SEC

This monitored 24Vdc ANSI style electric release (strike) is supplied with a short faceplate and is field selectable for fail-safe or fail-secure operation. Recommended for metal door frames but also suitable for timber frames.

FEATURES

- Ansi style release
 - Switchable fail safe / fail secure
 - Lip extensions available
 - Reversible
 - 24Vdc Current consumption with 150mA current draw
 - Lock monitoring
 - Short faceplate suitable for metal doors
-
- TIP; Fail safe means when the power is cut the door will open, fail secure means when the power is cut the door will remain shut.

TECHNICAL INFORMATION

- Power Input: 12 V DC
- Voltage Tolerance: 15%
- Current Draw: 0.25 A@12 VDC; 0.15 A@24 VDC at temperature 20
- Sensor Switch monitored output (optional model), Rating 2A@125V, indicates the lockset locked or unlocked status
- Operating Temperature: -10~45
- Humidity: 0~95% non-condensing
- Weight: 380g approx

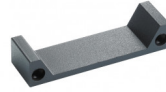
RELATED PRODUCTS



DU04-KGG300SG



ER310LM-24



LP025



SASHFP