

G10010DS



GIANNI STANDARD UNMONITORED MAGLOCK WITH DOOR STATUS

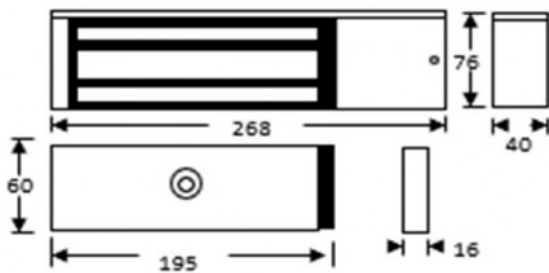
Standard single unmonitored magnetic lock designed for indoor applications where 545kg holding force is required. This model includes door status monitoring contacts to monitor the door position (open or closed).

FEATURES

- Gianni standard unmonitored maglock with door status

TECHNICAL INFORMATION

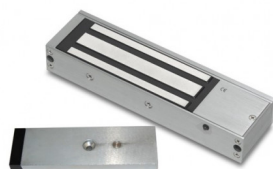
- Standard single unmonitored magnetic lock designed for indoor applications where 545kg holding force is required.
- This model includes door status monitoring contacts to monitor the door position (open or closed).



RELATED PRODUCTS



EM500CL



G10020DS



KGG200SG



SPB003S-ILLUM