

## GD830S-12



### 12VDC WALL MOUNT DOOR RETAINER

This surface mount door retaining magnet is typically linked to a fire alarm to allow the door to close in the event of an emergency situation. The door must also be fitted with a spring loaded door closer.

#### FEATURES

- Surface mount
- Black cast alloy body
- Armature plate included (GD830ARM)
- Override button enables manual release

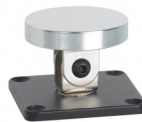
#### TECHNICAL INFORMATION

- Up to 32kg (70lb) holding force
- Current draw = 120mA @ 12Vdc

## RELATED PRODUCTS



DRM-135-24



GD830ARM



GD830S-24