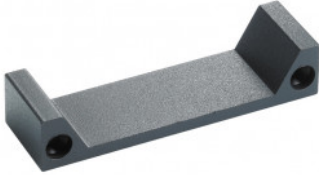


LP025



25MM LIP EXTENSION FOR ER310 RANGE OF RELEASES

25mm metal lip extension for ER310 range of releases. Used when a release is fitted to a deep door frame to protect the frame and give a professional finish.

FEATURES

- 85(H) x 17(D) x 25(W)mm

RELATED PRODUCTS



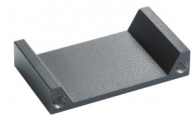
ER310-1224



ER310LM



ER310S-24



LP050