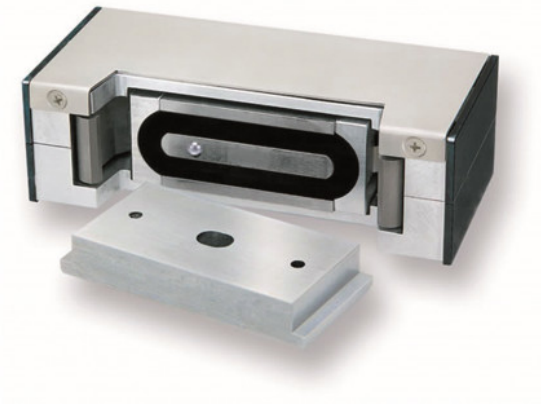


## SECURITRON-MM15DT



### ELECTRO-MECHANICAL FAIL SAFE DOOR LOCK 1814KG

The Securitron MM15 MEMLOCK is a 4000lbs holding force dual voltage dual current Magnalock for interior or perimeter doors where ultra-high security and compact size are required.

#### FEATURES

- 4000lb holding force provides an unmatched level of security
- Dual voltage (12/24VDC) and dual current (AC/DC) operation
- Mounting plate provides easy and accurate installation
- Fail safe, but can be installed with a battery backup power supply
- Optional door position switch and anti-tamper switch
- Prepped for use with 1/2" conduit
- Available finishes include stainless, black or polished brass (US03)
- Brackets and accessories to configure any opening
- Indoor use only
- UL listed

## RELATED PRODUCTS



CP3-LSRC-DB



EASIPROX-BT



NT200-S



SL183