

EM05-FIRE



SLIM FIRE RATED MONITORED DOUBLE MAGLOCK 12/24VDC

Fire rated slim monitored double magnetic lock for double doors. It's compact design makes it ideal for indoor applications where 275kg of holding force is sufficient. The monitoring provides LED lock status indication and relay contacts for signalling. (NOT A BUILD PRODUCT)

FEATURES

- MOV provides spike and surge protection
- Fail-safe operation (power to lock)
- Anti-residual magnetism protection
- Top-plate, armature-plate and fixings included
- Slim design
- Dual voltage 12Vdc or 24Vdc (selectable)
- Surface mount
- Silver anodized aluminium finish

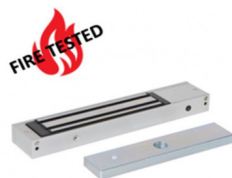
TECHNICAL INFORMATION

- Holding force: up to 275kg (600lb) per side
- Current draw = 500mA @ 12Vdc / 250mA @ 24Vdc per side
- Voltage tolerance: +/- 15%
- Operating temp: -10°C to +55°C
- Humidity: 0-95% non-condensating
- Weight: 4kg approx.

RELATED PRODUCTS



CM41/4



EM02-FIRE



EM300L-FIRE



EM300ZL-FIRE