

ER310LM-24



24VDC MONITORED ANSI RELEASE LONG FACEPLATE FAIL SAFE/SECURE

This monitored 24Vdc ANSI style electric release (strike) is supplied with a long faceplate and is field selectable for fail-safe or fail-secure operation. Recommended for timber door frames but also suitable for metal frames.

FEATURES

- Ansi style release
 - Switchable fail safe / fail secure
 - Lip extensions available
 - Reversible
 - 24Vdc Current consumption with 150mAmp current draw
 - Lock monitoring
 - Long faceplate suitable for wooden doors
- TIP; Fail safe means when the power is cut the door will open, fail secure means when the power is cut the door will remain shut.

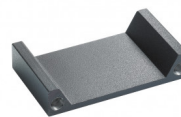
RELATED PRODUCTS



ER310-1224



ER310SM-24



LP050



SASHFP