

EXTTOPSTAN



EXTENDED TOP PLATE FOR STANDARD MAGLOCK

Replaces the top plate supplied with a standard maglock to give offset fixing points into the transom. Enables the maglock to be stepped back from the door frame when transom is narrow.

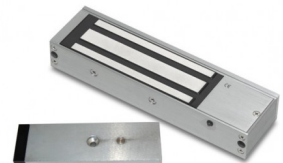
FEATURES

- For use with SSP's standard maglock range
- Satin anodised aluminium
- Multiple countersunk fixing points
- 2 required per double maglock
- Fixings not included

TECHNICAL INFORMATION

- Dimensions - 268mm(L) x 64mm(W) x 6mm(D) thick

RELATED PRODUCTS

**EM10****EM10DS****EM20****EM20DS**