

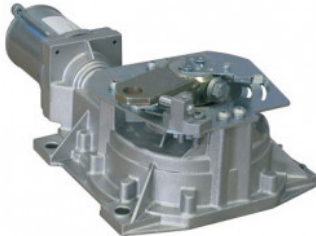


**SPECIALIZED
SECURITY
PRODUCTS**

sales@specialized-security.co.uk
www.specialized-security.co.uk

01763 274 223

BFT-ELI250V



BFT ELI-AC-A35V 230V FAST ELECTROMECH. UNDERGROUND MOTOR

BFT ELI-AC-A35V 230v fast electromech. underground motor for gates up to 2m

FEATURES

- 230V operator
- Maximum gate leaf up to 2m

TECHNICAL INFORMATION

- Max leaf: 200kg
- Control panel: RIGEL6
- Cycle time: 14 sec
- Impact reaction: Electric clutch
- Frequency of use: Semi intensive